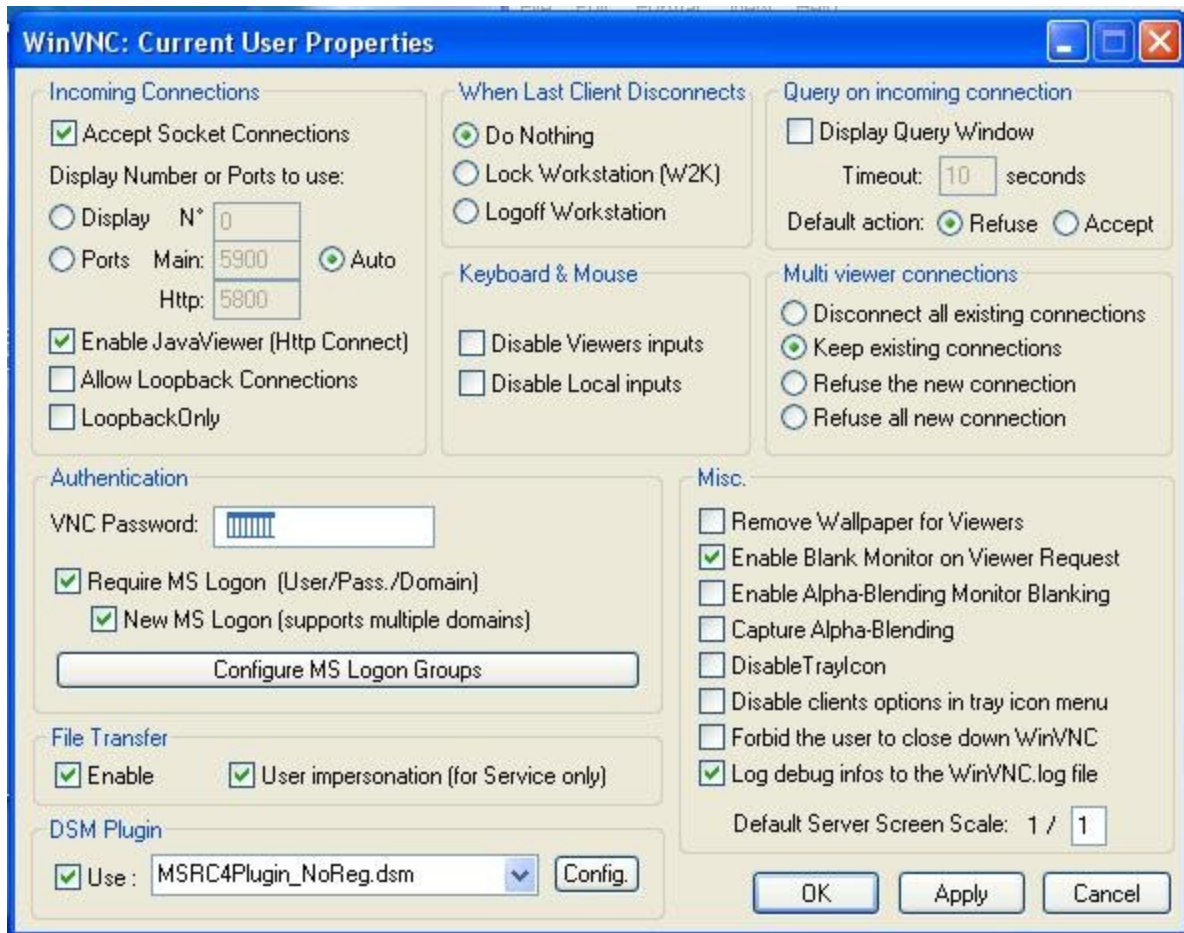


**Ultra VNC Server Admin Properties showing you
the registry locations to all of those settings + MSRC4 Plugin and
MS Logon Groups Rev 3 2006-01-16**



[HKEY_LOCAL_MACHINE\SOFTWARE\ORL] <-----location in windows Registry of UVNC

[HKEY_LOCAL_MACHINE\SOFTWARE\ORL\WinVNC3]

"DebugMode"=dword:00000002

"DebugLevel"=dword:0000000a

"AllowLoopback"=dword:00000000 <-- Allow Loopback Connections 0 or 1 depending if check or not


"LoopbackOnly"=dword:00000000<----- LoopbackOnly 0 or 1 depending if checked or not

"DisableTrayIcon"=dword:00000000<--- DisableTrayIcon 0 or 1 depending if checked or not

"MSLogonRequired"=dword:00000001<-- Require MS Logon (User/Pass./Domain) 0 or 1 depending if

checked or not

"NewMSLogon"=dword:00000001 <- New MS Logon (supports multiple domains)
0 or 1 depending if checked or not

"UseDSMPlugin"=dword:00000001 <-


The MSRC4Plugin_NoReg.dsm is found under your default plugin folder be sure to copy it to the <C:\Program Files\UltraVNC\> folder if you intend to use it. You must also create a key file for the encryption engine to work. This is done by left clicking on the Config button



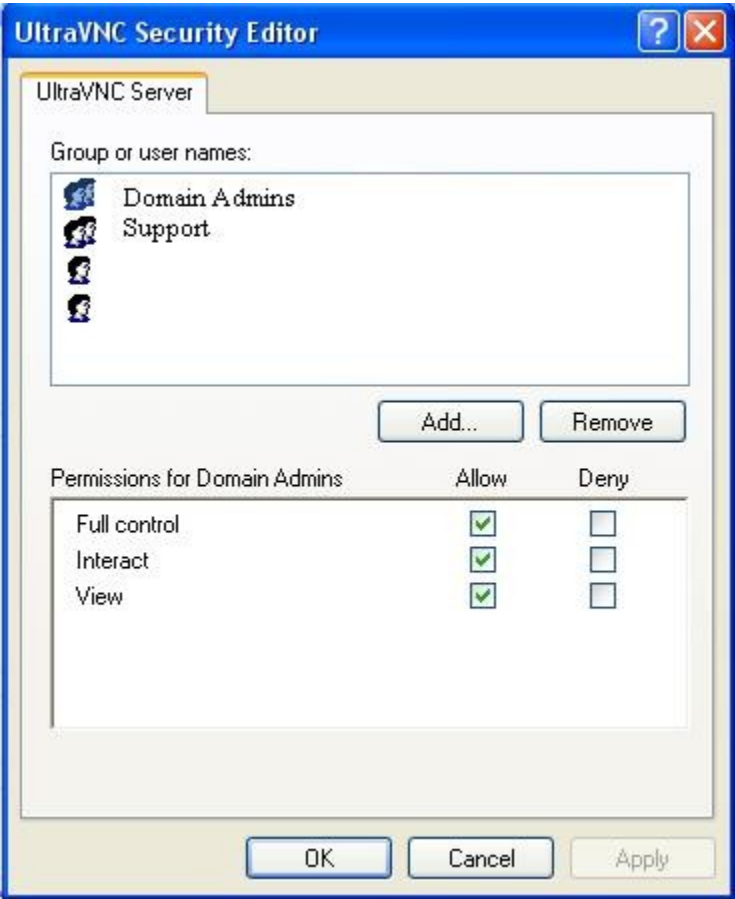
here you can pick your key strength and then left click on Gen Key
Once the key is generated you need to goto <C:\Program Files\UltraVNC\>
and rename the file to rc4.key {Be sure if your are changing keys that you kill the vncserver to make changes otherwise you may get an access denied error }

"ConnectPriority"=dword:00000001 ?????

"DSMPlugin"=Hex Value

"ACL"= Hex Value <--- 

Left click on Configure MS Logon Groups if the the Mslogon is checked and if New Mslogon is checked



Add your domain accounts/ Users and select the permissions to meet your needs

[HKEY_LOCAL_MACHINE\SOFTWARE\ORL\WinVNC3\Default]

"FileTransferEnabled"=dword:00000001<-----



"FTUserImpersonation"=dword:00000001<-----


"BlankMonitorEnabled"=dword:00000000<-----



"CaptureAlphaBlending"=dword:00000001<-----





"BlackAlphaBlending"=dword:00000000<----- ?????

"DefaultScale"=dword:00000001<----- 

"UseDSMPlugin"=dword:00000001 <----- 


"DSMPlugin"=hex value

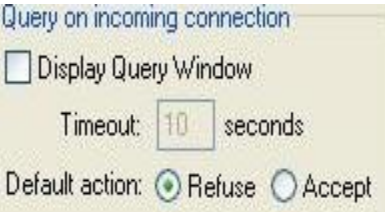
"SocketConnect"=dword:00000001<---- 
The Display is ID number
The Ports Section can be changed
to your desired settings these are default
values


"HTTPConnect"=dword:00000001<--- 

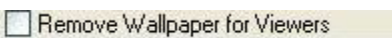
"XDMCPCConnect"=dword:00000000 ---????


"AutoPortSelect"=dword:00000001 <--- the auto circle in the above Incoming Connections picture

"InputsEnabled"=dword:00000001 <-- ----- 

"IdleTimeout"=dword:00000000 <-----
"QuerySetting"=dword:00000002<----- 

"QueryTimeout"=dword:0000000a<-----
"QueryAccept"=dword:00000000<-----
"LockSetting"=dword:00000000<----- 

"RemoveWallpaper"=dword:00000001<----- 

"Password"=hex: <--- Classic VNC Authentication<----- 

"AllowShutdown"=dword:00000001<----- Forbid the user to close down WinVNC

"AllowProperties"=dword:00000001<-----

This will either display if dword 1
or be disabled if dword 0



"AllowEditClients"=dword:00000001<----- ?????

Notes: Grey Colors:

Grey colors only works with 32 bits color screen resolution.
16/24 bits colors resolutions just don't work with grey colors.